

JOHN DEERE Q800 SERIES INSTALLATION INSTRUCTIONS

1. Remove the factory discharge chute using a punch, hammer, and pliers. Retain for future trade-in.



Figure 1

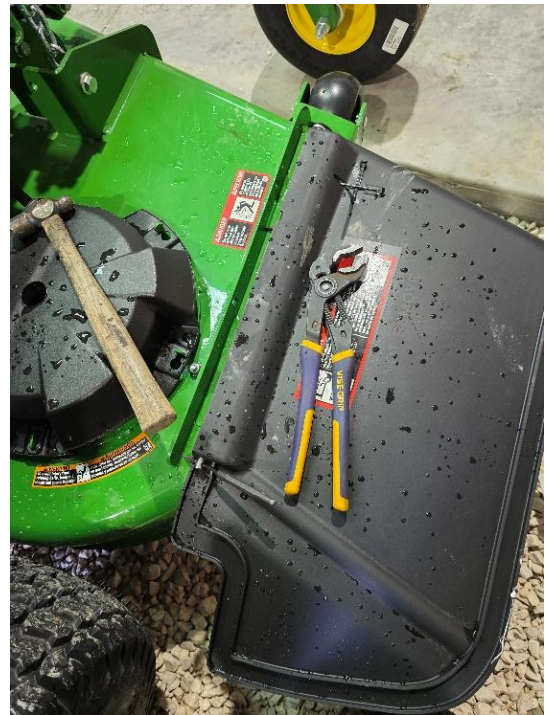


Figure 2

2. Install blower adapter plate onto mower deck.

2a. Place adapter plate onto deck. Align with existing square hole and install M8X25 carriage bolt w/ flanged lock nut. Make sure adapter is square with the deck. Mark 2nd hole towards the rear of the mower to be drilled out to 5/16". Install M8X25 flange bolt with flanged lock nut.



Figure 3



Figure 4

2b. Using the yellow circled pre-drilled hole in front of adapter plate as a guide. Drill a 3/8 hole into the gage wheel housing. Install 3/8 x 2-1/2 bolt w/ flat washer and flanged lock nut as show in pictures.



Figure 5

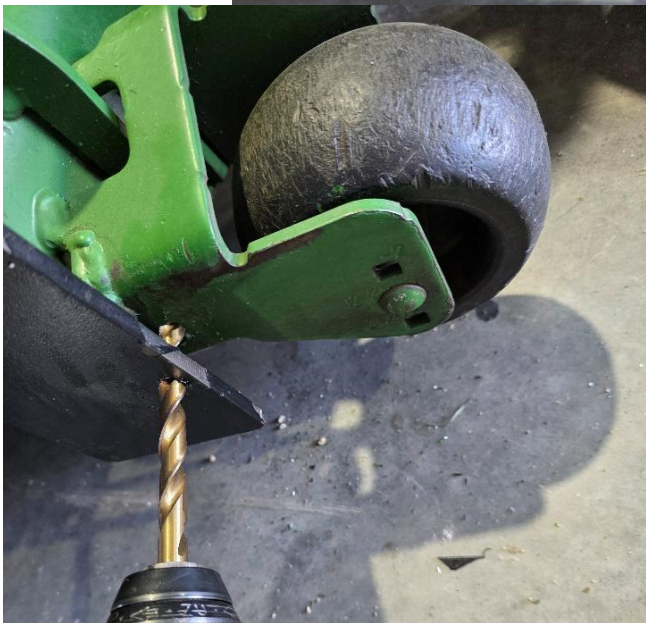


Figure 6



Figure 7

3. Install blower drive pulley (48" decks use 5" pulley)(54/60" decks use 5.5" TCU24179) (72" decks use 7" pulley).

3a. Remove the 4 oem bolts from the top of the RH blade drive pulley



Figure 8

3b. Install 4 – M8x50 bolts into blower drive pulley. (Use flat washers if bolt is not a flange head). Place 4 – TCU24178 spacers on top of blade drive pulley and insert blower drive pulley with bolts. **Torque to ~19 ft-lbs for a Grade 8.8 dry bolt to about 29 ft-lbs for a Grade 10.9 dry bolt. **(for reference only. Refer to JD service manual for actual spec)

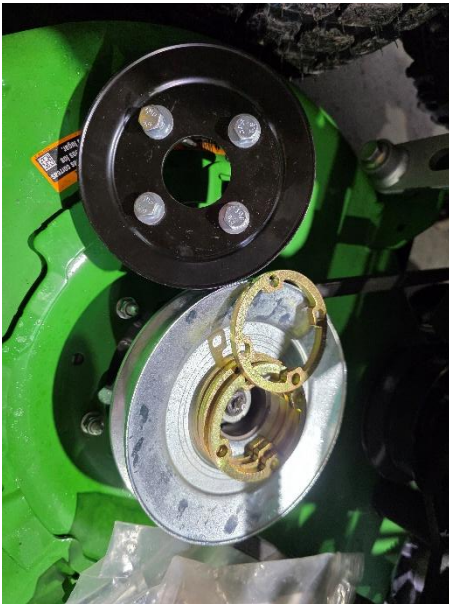


Figure 10

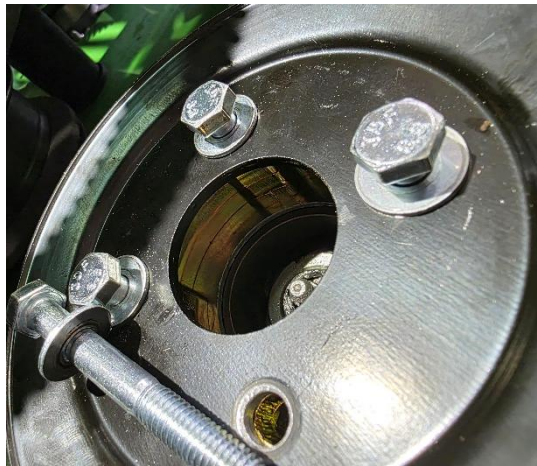


Figure 11



Figure 12

3. Install v-belt onto blower. (48" use 1/2"X39)(54/60 use 1/2"X42-1/4 M154157)(72" use 1/2"X50)

4. Install Exmark 8"blower onto mower deck. Place blower "pin" into adapter plate "tube" towards rear of deck. Swing blower towards mower deck and latch blower to adapter housing by tightening the 3/8" bolt of latch using 2-9/16" wrench/sockets. (Socket head bolt on blower may need to be loosened and moved in it slot for fitment)

5. Install v-belt onto blower drive pulley by pushing blower idler pulley towards rear of mower. Verify that v-belt is in the groove of all 3 pulleys. Verify belt alignment from drive pulley to idler pulley. (If belt doesn't line up, add or subtract 1/4" spacers. If adding spacers bolt length may need to be lengthened 5mm per spacer added.)



Figure 13

6. Install lower rear mounts

6a. Jack-up rear of mower enough to remove rear wheels. Lift on hydro support (see picture) Place jack stands under each hydro (see picture)

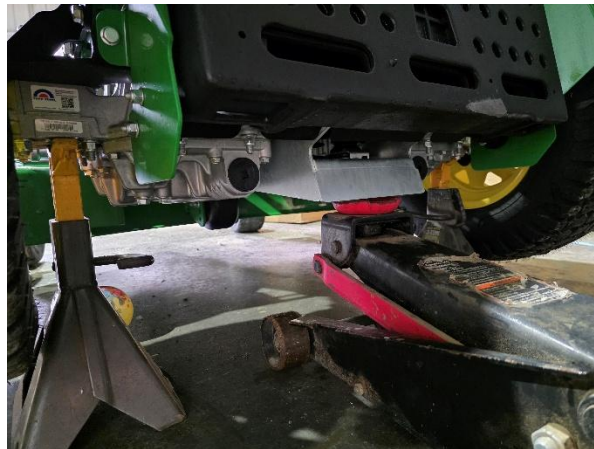


Figure 14

6b. Remove rear wheels using 3/4" socket

6c. Loosen/Remove the RH fuel tank. Remove plastic cover (see picture). Remove M8 nuts w/ 13MM socket. (see pictures) Remove top fuel tank holder. Push down slightly to allow bracket to slide off bolts. Support tank using bungee cord.



Figure 15



Figure 16



Figure 17



Figure 18

6d. Install armbar/stabilizer mount. Remove the M10X30 upper hydro mount bolts and re-use for the armbar mount re-using existing nuts and replacing the M10X25 bolts. (see pictures)



Figure 19



Figure 20

6e. Support the lower fuel tank mounts. Install the provided M12x30 bolt w/ regular nut in either hole circled in Red to hold up fuel tank lower mount during install. (See picture) Remove and re-use bolt for other side once lower mount is installed

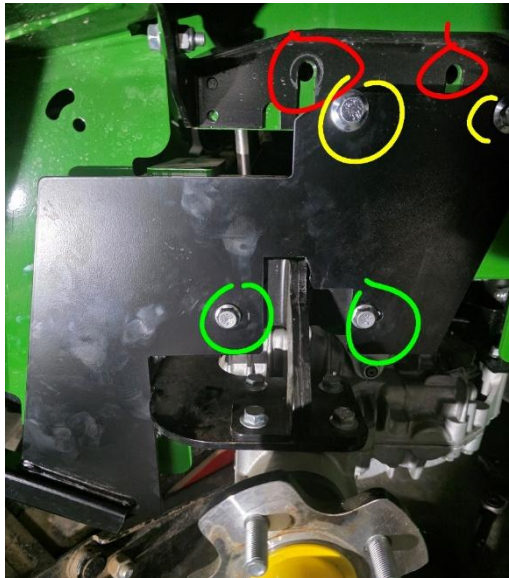


Figure 21

6f. Install the LH and RH lower mounts behind the rear wheels. Remove oem M12 bolts(circled in yellow on figure 20 on previous page picture). Install provided M12X80 flange bolt with 1-1/2" spacers (see picture) in holes circled Yellow. Install provided M10X35 bolts in holes circled Red.



Figure 22



Figure 23

6g. Repeat step 6f for other side.

6h. Re-install rear wheels. Torque to spec. For 48" deck models install provided 5/16" wheels spacers.

7. Install rear hitch onto lower brackets. Fasten using provided 5/16x2-1/4 bolts.



Figure 24



Figure 25

8. Install bagger frame onto rear hitch. Have bagger frame tilted back, slide feet into hooks, lift up to level allowing feet

to "hook" into hitch bracket.



Figure 26



Figure 27

9. Install armbar/stabilizer bar to keep bagger frame vertical.



Figure 28



Figure 29



Figure 30



Figure 31

10. Install hose. Slide hose into bagger hose inlet “snorkel.” Slide hose over blower output tube and fasten latches. Verify correct hose length by placing deck to 2” and inspecting where hose sits in snorkel. Hose should be through hole just enough that it would not fall out while being bounced around. See Figure 32



Figure 32

11. Install front weight bar. Use supplied 3/8x4-1/2 bolts with flat washers, flange locking nuts, and backer plates to fasten.



Figure 33

12. Level deck. Set tire pressures. Rear tires should get 1 to 2 more psi than oems recommended PSI. Verify deck levelness side to side and deck rake (front to back)

13. Verify correct WOT engine RPM. Check with oem. Typically engine RPM no load WOT should be 3600 RPM.



Figure 34



Figure 35



Figure 36

For parts and accessories, contact Brady Peters at Red Magic Performance Products (712) 541-7640



Red Magic Performance Products LLC